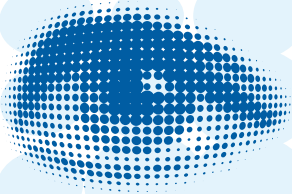


A 14 Page Bespoke Signs Catalogue

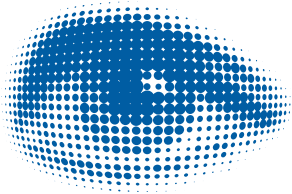


allspeed

signs & graphics ltd

Customer Branded Safety Signs





allspeed
signs & graphics ltd

The following pages detail our core site safety sign range, held on our database and are available for you with your corporate branding.

To use this guide, simply choose your design, contact our sales office with the part number and the quantity you require and we will advise of the unit cost.

Each sign can be produced in one of 3 material types as detailed below:-

Aluminium Composite Shatterproof Board

Foamex Plastic Board

Fluted Correx Board

Should you require any other designs or if we can be of further assistance, please do not hesitate to contact our sales office on:-

Tel: 01329 234 224

E-mail: sales@allspeedsigns.co.uk

Site Safety Rules Signage



Size:
600mm
x
400mm

As01



As02



As03



Sizes: 810mm x 610mm

As04



As05



As06



Sizes: 610mm x 810mm

As07

Site Safety Rules Signage

Your Logo Here

SITE SAFETY STARTS HERE

The required PPE must be worn on this site	Be safety inducted to work on this site
Safety Helmets	Report all accidents immediately
High Visibility Clothing	All visitors and drivers must report to site office
Foot Protection	No unauthorised persons allowed beyond this point
Eye Protection	Children must not play on this site
Ear Protection	Construction site
	Keep out

Sizes:
1000mm x 1220mm
or
810mm x 610mm

As08

Your Logo Here

SITE SAFETY STARTS HERE

	Site speed limit		Full body high visibility clothing must be worn
	No admittance for unauthorised personnel		Protective boots must be worn
	All Staff must report to site office		Safety helmets must be worn where there is risk of head injury
	Heavy plant machinery operate on this site		Safety glasses must be worn
			Protective gloves must be worn

Size:
1200mm
x
200mm

As09

Site Safety Rules Signage

CDM NOTICE BOARD Your Logo Here

THIS IS A HARD HAT SITE

TOE CAPPED LACE UP BOOTS WITH ANKLE SUPPORT TO BE WORN

SAFETY SPECTACLES TO BE WORN

GLOVES TO BE WORN

LONG SLEEVE FIRE RETARDANT HIGH VISIBILITY VESTS TO BE WORN

EAR PROTECTION TO BE WORN IF REQUIRED

LIVE ELECTRICAL EQUIPMENT

ALL DELIVERIES REPORT TO THE SITE SUPERVISOR UPON ARRIVAL AND ARE TO ACCESS AND EGRESS THE SITE WITH THE AID OF A BANKSMAN

NO UNAUTHORISED ENTRY. ALL VISITORS TO REPORT TO THE SITE SUPERVISOR TO SIGN IN AND RECEIVE A MANDATORY INDUCTION

ALL SIGNAGE MUST BE OBSERVED AND FOLLOWED

MUSTER POINT

ALL OPERATIVES AND VISITORS MUST BE MADE AWARE OF THE THREE METRE RULE

MAINTAIN A 3m NO-GO AREA AROUND MOVING VEHICLES AND OPERATING PLANT

Notice Board

THIS IS A CDM SITE

Size:
1220mm
X
810mm

Media: Correx, Foamex or Aluminium Composite

As10

Your Logo Here

HI-VIS VESTS TO BE WORN AT ALL TIMES

A 10MPH SPEED LIMIT MUST BE OBSERVED AT ALL TIMES

STAY IN LEFT HAND LANE AND PROCEED TO YARD CONTROL SIGN

AWAIT INSTRUCTIONS BEFORE PROCEEDING TO BAYS / YARD

BAY LIGHT SYSTEM MUST BE ADHERED TO

KEYS AND PAPERWORK HANDED INTO GOODS INWARDS OFFICE

IF THE FIRE ALARM SOUNDS ALL DRIVERS MUST REPORT TO THE ASSEMBLY POINT AT THE ENTRANCE GATE

SMOKING IN DESIGNATED AREAS ONLY

ONE WAY SYSTEM IN PLACE LEAVE VIA EXIT GATE

WE RESERVE THE RIGHT TO SEARCH VEHICLES LEAVING THE SITE

LOADING BAY PROCEDURE

GREEN LIGHT REVERSE ONTO BAY
KEYS AND PAPERWORK TO GOODS INWARDS OFFICE

RED LIGHT LOADING / UNLOADING COMMENCES

GREEN LIGHT REPORT TO GOODS INWARDS
COLLECT KEYS AND PAPERWORK LEAVE THE BAY

DO NOT LEAVE BAY WHEN LIGHT IS RED

Size:
1100mm
X
1500mm

As11

Media: Foamex or Aluminium Composite

Site Safety Rules Signage

Your Logo Here

SITE SAFETY



No unauthorised entry
All visitors report to site office



Minimum PPE beyond this point:- Hard Hat,
Safety Boots with laces and long sleeved Hi-Vis







DANGER

Heavy Plant & Equipment





Notice to Parents and Children
Children must not play on this site



Additional PPE may be required






Think Safety
Yours & Others



NO SMOKING



First aid point located in Site Office

Size: 800mm x 1200mm

As12

Size: 900mm x 1500mm

Your Logo Here



SITE SAFETY IS NO ACCIDENT

A ZERO TOLERANCE OPERATES ON THIS SITE
 Safety signs & procedures must be observed. Personal protection
& safety equipment must be used as directed. Any Accident
or Near Miss must be immediately reported to Site Supervisor



No work prior to
Health & Safety induction



DEMOLITION SITE

Children should be warned of the
dangers of entering Demolition Sites

	Safety Helmets must be worn		Safety Footwear must be worn
	Safety Glasses must be worn		Safety Gloves must be worn
	Hi Viz must be worn		All drivers & visitors must report to Site Supervisor
	All vehicle reversing must be banked		No access for unauthorised personnel
	CAUTION Look out for trip hazards		CAUTION Heavy machinery operating on site

Keep main gate area clear
for emergency vehicles access

As13

General Signage

Your Logo Here

**Site
W/C**

Ag01

Your Logo Here

**Site
canteen**

Ag02

Your Logo Here

**Site
office**

Ag03

Your Logo Here

**Visitors
car park**

Ag04

Your Logo Here

**Visitors
report to
site office**

Ag05

Your Logo Here

**Leave
entrance
clear**

Ag06

Your Logo Here

**Female
W/C**

Ag07

Your Logo Here

**Male
W/C**

Ag08

Your Logo Here

**Staff
car park**

Ag09

Your Logo Here

**Please
sign in here**

Ag10

Your Logo Here

**We apologise
for any
inconvenience**

Ag11

Your Logo Here

**Reverse
parking
only**

Ag12

Your Logo Here

**Please
sign in
and out**

Ag13

Your Logo Here

**Contractors
car parking**

Ag14

Your Logo Here

Toilet

Ag15

Your Logo Here

**Valuables
left at owners
risk**

Ag16

Your Logo Here



Ag17

Your Logo Here



Ag18

Prohibition Signage



Ap01



Ap02



Ap03



Ap04



Ap05



Ap06



Ap07



Ap08



Ap09



Ap10



Ap11



Ap12



Ap13



Ap14



Ap15



Ap16

Hazard Signage

Your Logo Here



Danger
Men at work

Aw01

Your Logo Here



Danger
Men working overhead

Aw02

Your Logo Here



Danger
Demolition in progress

Aw03

Your Logo Here



Caution
Slippery floor surface

Aw04

Your Logo Here



Danger
Scaffolding incomplete

Aw05

Your Logo Here



Danger
Fragile roof

Aw06

Your Logo Here



Caution
Fork-Lift trucks

Aw07

Your Logo Here



Caution
Trip hazard

Aw08

Your Logo Here



Danger
Construction site
Keep out

Aw09

Your Logo Here



Caution
Wet floor

Aw10

Your Logo Here



Caution
Painting in progress

Aw11

Your Logo Here



Caution
Wet paint

Aw12

Your Logo Here



Danger
Live wires

Aw13

Your Logo Here



Danger
Live wires overhead

Aw14

Your Logo Here



Danger
High voltage

Aw15

Your Logo Here



Danger
Mains voltage

Aw16

Hazard Signage

Your Logo Here



Danger
**240
volts**

Aw17

Your Logo Here



Danger
**110
volts**

Aw18

Your Logo Here



Danger
**electric
shock risk**

Aw19

Your Logo Here



Danger
**of
death**

Aw20

Your Logo Here



Danger
Corrosive

Aw21

Your Logo Here



Danger
**Deep
water**

Aw22

Your Logo Here



Caution
**C.C.T.V.
in operation**

Aw23

Your Logo Here



Warning
**Razor
wire**

Aw24

Your Logo Here



Caution
**Anti-climb
paint**

Aw25

Your Logo Here



Danger
**Automatic
machinery
may start
without warning**

Aw26

Your Logo Here



Caution
**Cleaning
in progress**

Aw27

Your Logo Here



Trespassers
**Will be
prosecuted**

Aw28

Your Logo Here



**Mind
the
step**

Aw29

Your Logo Here



**Mind
your
head**

Aw30

Your Logo Here



L.P.G.
**Highly
flammable**

Aw31

Your Logo Here




Danger
Asbestos

Aw32

Mandatory Signage

Your Logo Here



PPE must be worn beyond this point

Am01

Your Logo Here



Eye protection must be worn

Am02

Your Logo Here



Ear protection must be worn

Am03

Your Logo Here



Hard hats must be worn in this area

Am04

Your Logo Here



Keep out

Am05

Your Logo Here



Protective footwear must be worn

Am06

Your Logo Here



**No hard hat
No boots
No Job**

Am07

Your Logo Here



Protective gloves must be worn

Am08

Your Logo Here



High Visibility vests must be worn

Am09

Your Logo Here



All staff must report to site office

Am10

Your Logo Here



All drivers must report to site office

Am11

Your Logo Here



All visitors must report to site office

Am12

Your Logo Here



Health & Safety At Work Act 1974
Anyone entering these premises must comply with the regulations covered by the above act

Am13

Your Logo Here



Protective clothing must be worn

Am14

Your Logo Here



Safety harness must be worn

Am15

Your Logo Here



Face Shield must be worn

Am16

Fire & H&S Signage



Af01



Af02



Af03



Af04



Af05



Af06



Af07



Af08



Af09



Af10



Af11



Af12



Af13



Af14



Af15



Af16

Size: 400mm x 150mm



Af17

Size: 300mm x 150mm



Af18



Af19



Af20

Size: 600mm x 400mm



Ah01



Ah02

Sizes: 400mm x 600mm



Ah03



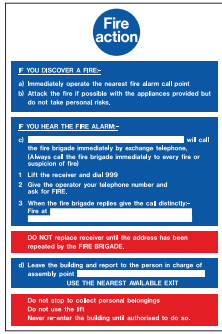
Ah04

Size: 300mm x 100mm

Fire & H&S Signage



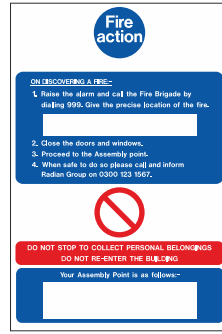
Af21



Af22



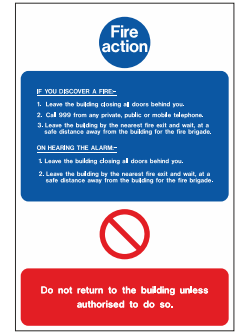
Af23



Af24



Af25



Af26

Sizes: 200mm x 300mm



Af27



Af28



Af29



Af30



Af31



Af32



Af33



Af34



Af35



Af36

Sizes: 100mm x 100mm or 150mm x 150mm



Af37



Af38



Af39

Sizes: 400mm x 150mm



Af40



Af41



Af42



Af43



Af44



Af45

Sizes: 200mm x 300mm



Af46



Af47



Af48

Sizes: 200mm x 200mm



Af49

Size: 450mm x 200mm



Af50



Af51



Af52



Af53



Af54



Af55



Af56



Af57

Size: 200mm x 75mm



allspeed
signs & graphics ltd